

OPTIQUE

Light efficiency:

n/a Lumen/Watt

Light quality:

CRI: 93.3

Color temperature:

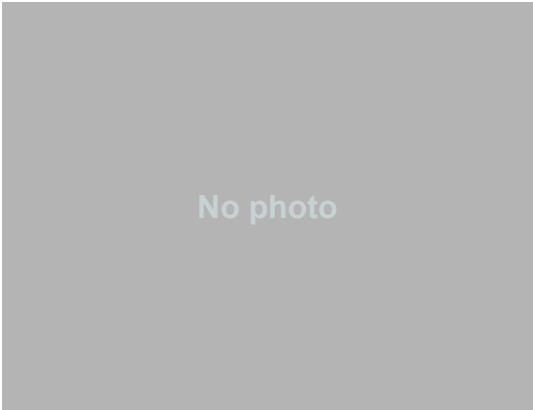
2439 K

Output: 180 lm

Peak: 115 cd

Power: 0.00 W

PF: n/a



No photo

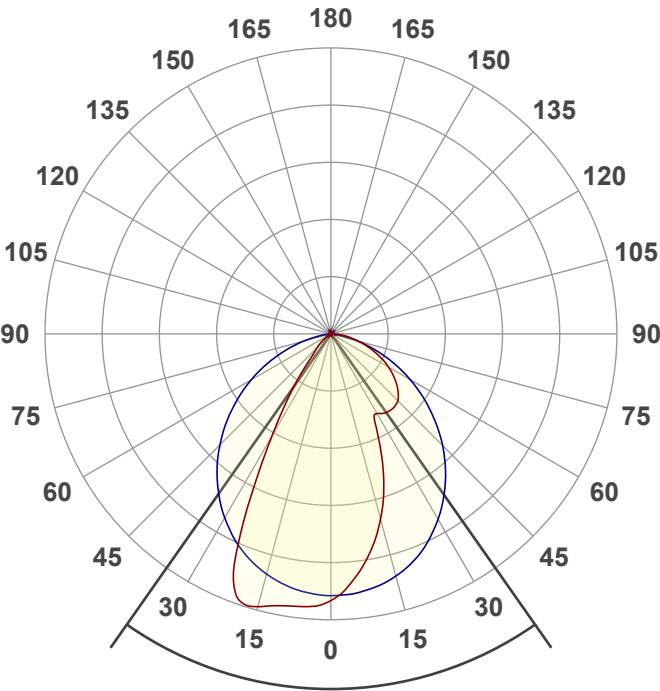
Tracking number: [n/a](#)

Product name:
OP-REC-PRFM2 TW5.5-CWWW

Item number:
OP-01-12MM-D-1500LM-24V-4000K-IN

Date and time:
6/12/2026 11:25:21 AM

Description:

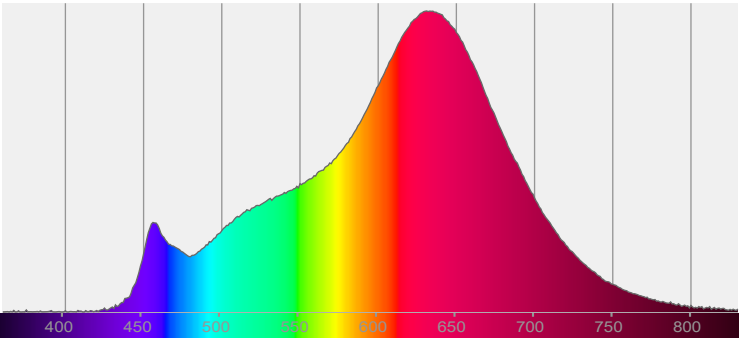


Beam angle **70.1°**

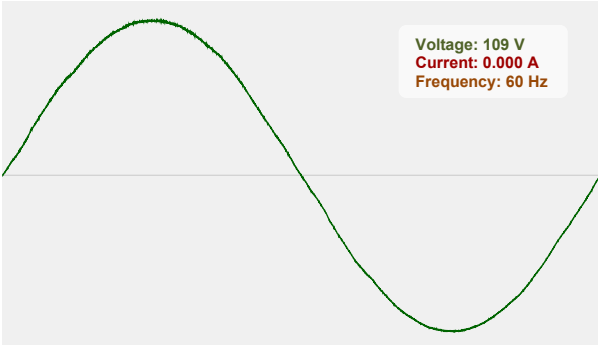


CIE 1931
x: 0.476
y: 0.404

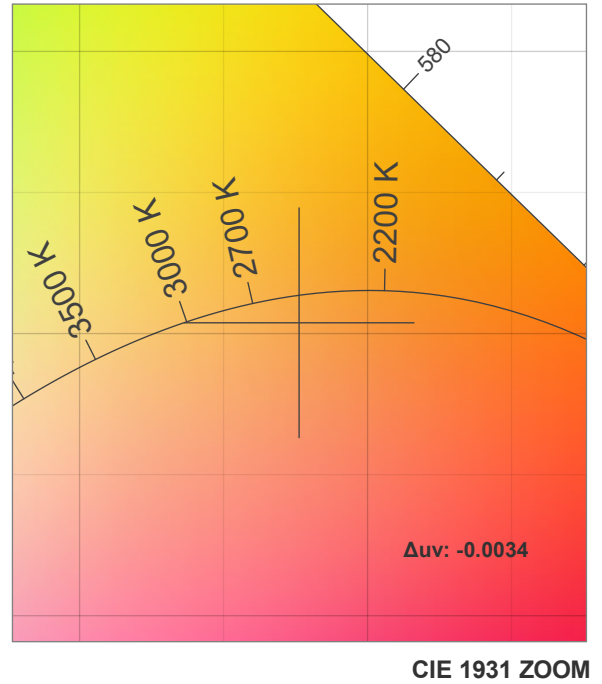
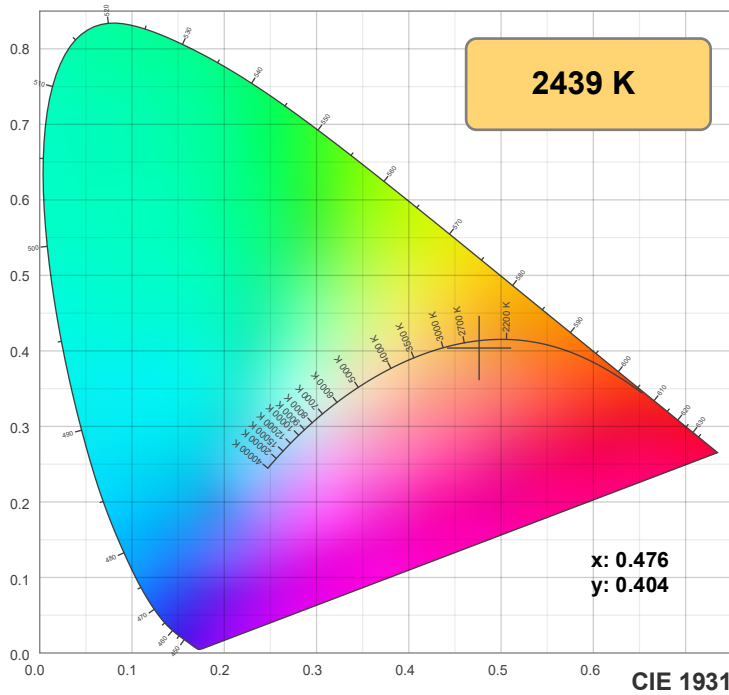
Spectra



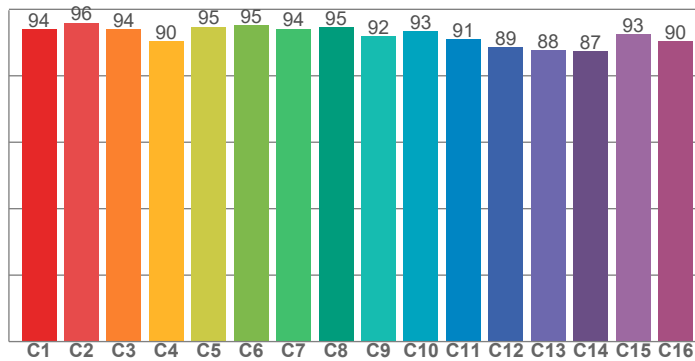
Power



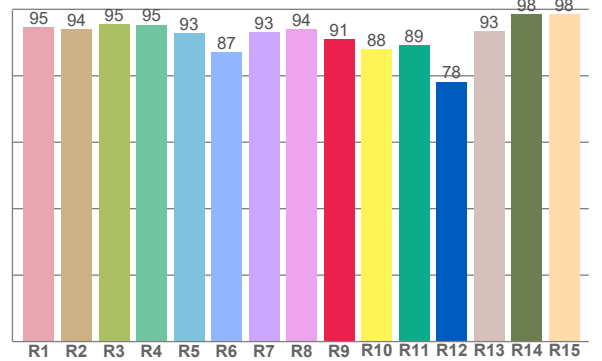
Voltage: 109 V
Current: 0.000 A
Frequency: 60 Hz



TM30: 92.4



CRI: 93.3 (R1-R8)



CRI R values, only R1-R8 are used to calculate final CRI value

R1	R2	R3	R4	R5	R6	R7	R8	R9	R10	R11	R12	R13	R14	R15
94.7	94.1	95.5	95.4	92.8	87.0	93.2	94.0	91.1	87.9	89.3	78.2	93.4	98.5	98.5

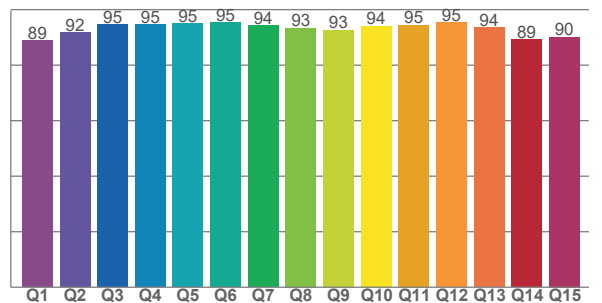
TM30 C values, 16 binned values out of total of 99 C values

C1	C2	C3	C4	C5	C6	C7	C8	C9	C10	C11	C12	C13	C14	C15	C16
93.9	96.0	94.0	90.4	94.7	95.1	94.2	94.6	91.8	93.4	91.0	88.6	87.7	87.4	92.6	90.3

CQS Q values

Q1	Q2	Q3	Q4	Q5	Q6	Q7	Q8	Q9	Q10	Q11	Q12	Q13	Q14	Q15
88.9	91.7	94.7	94.7	95.0	95.3	94.3	93.5	92.7	94.1	94.5	95.4	93.6	89.2	90.1

CQS: 92.4



Color parameters

Color temperature	Color rendering Index	Red component	Color fidelity	Color gamut	Color quality scale	Color coordinate cie 1931	Color coordinate cie 1931	Color coordinate	Color coordinate	Color deviation from black body
CCT	CRI	CRI R9	TM30 Rf	TM30 Rg	CQS	x	y	u	v	Δuv
2439 K	93.3	91.1	92.4	100.8	92.4	0.476	0.404	0.276	0.351	-0.0034

OPTIQUE

TM-30 details

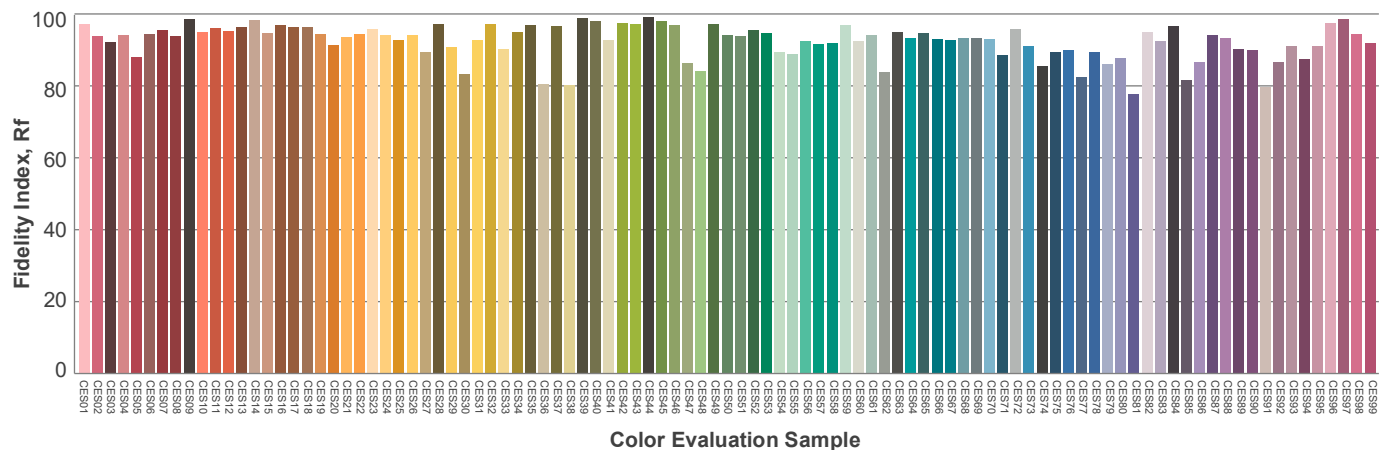
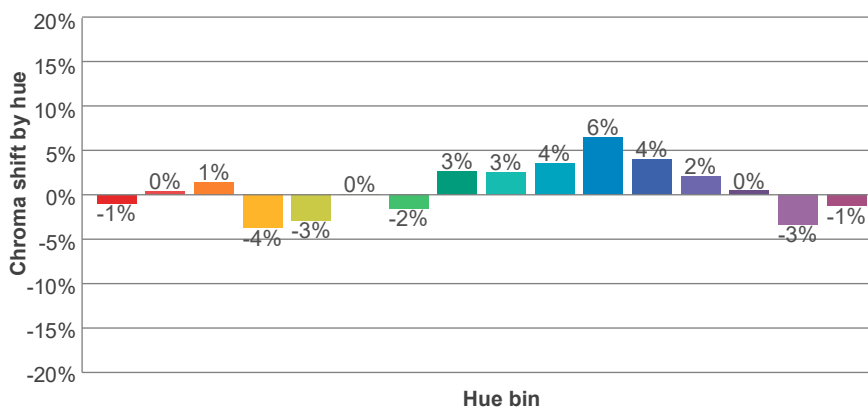
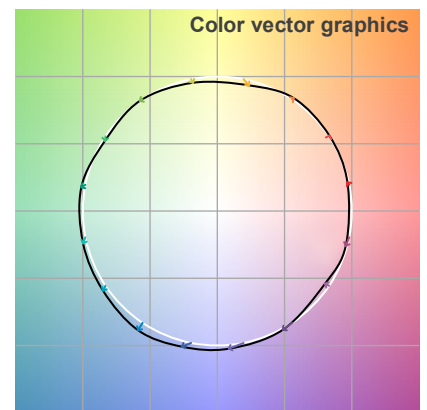
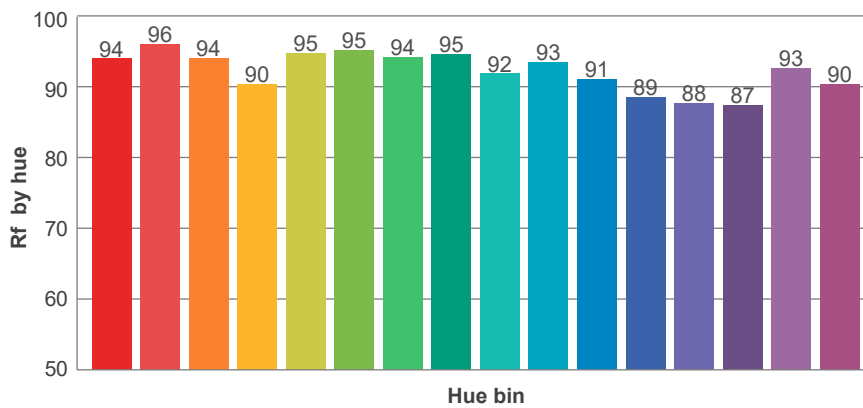
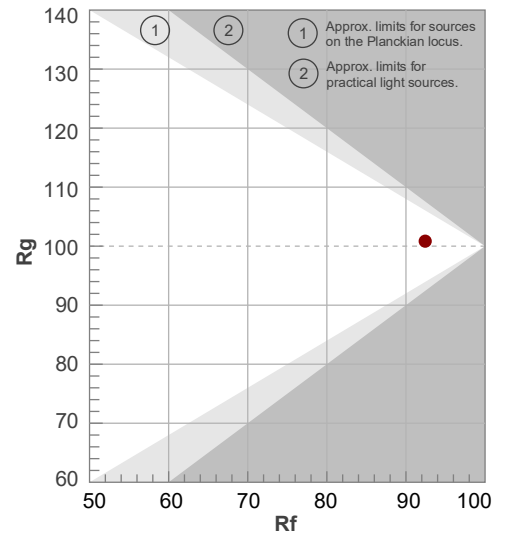
Rf 92.4

Fidelity index Rf

Rg 100.8

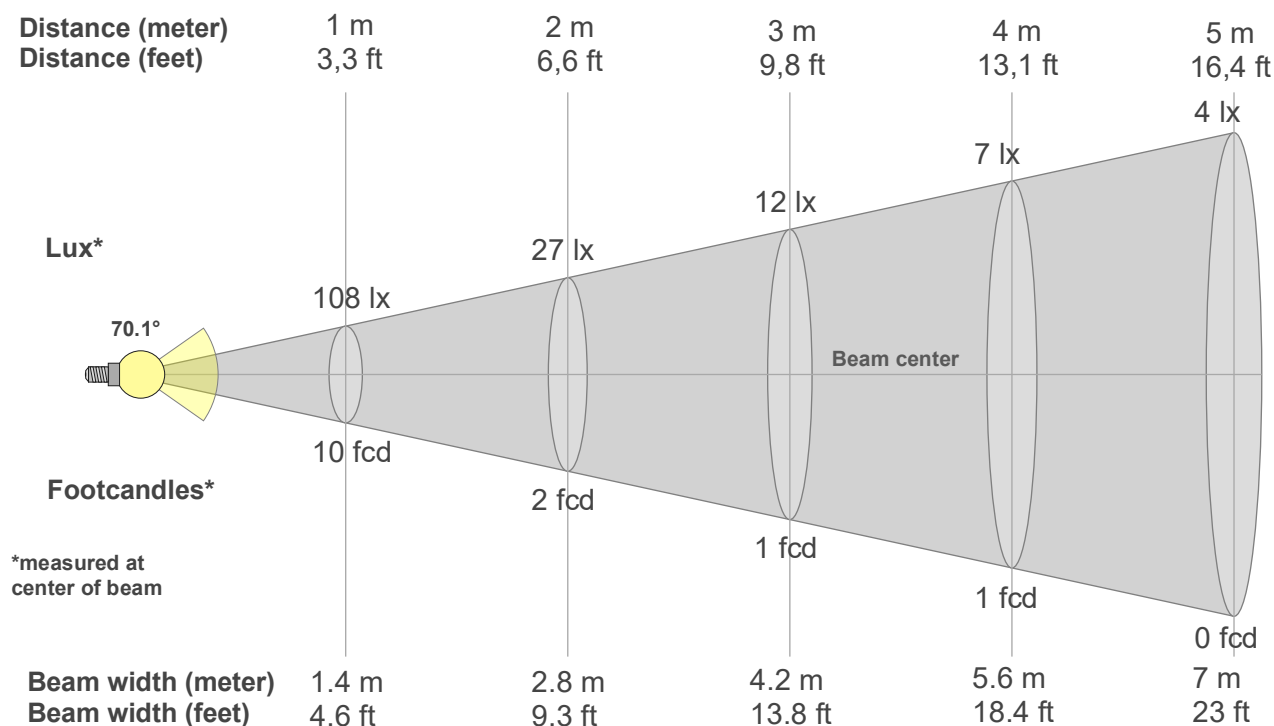
Gamut index Rg

Hue Bin	R _f	Shifts (%)	
		Chroma	Hue
1	94	-1%	2%
2	96	0%	0%
3	94	1%	-1%
4	90	-4%	-5%
5	95	-3%	-1%
6	95	0%	2%
7	94	-2%	3%
8	95	3%	2%
9	92	3%	4%
10	93	4%	2%
11	91	6%	0%
12	89	4%	-6%
13	88	2%	-12%
14	87	0%	-9%
15	93	-3%	0%
16	90	-1%	-7%



OPTIQUE

Beam details



Beam intensities from 1-20m

1m	2m	3m	4m	5m	6m	7m	8m	9m	10m	11m	12m	13m	14m	15m	16m	17m	18m	19m	20m
3.3ft	6.6ft	9.8ft	13.1ft	16.4ft	19.7ft	23ft	26.2ft	29.5ft	32.8ft	36.1ft	39.4ft	42.7ft	45.9ft	49.2ft	52.5ft	55.8ft	59.1ft	62.3ft	65.6ft
108lx	27lx	12lx	7lx	4lx	3lx	2lx	2lx	1lx	1lx	1lx	1lx	1lx	1lx	0lx	0lx	0lx	0lx	0lx	0lx
10fcd	2.5fcd	1.1fcd	0.6fcd	0.4fcd	0.3fcd	0.2fcd	0.2fcd	0.1fcd	0.1fcd	0.1fcd	0.1fcd	0.1fcd	0.1fcd	0fcd	0fcd	0fcd	0fcd	0fcd	0fcd

Intensities in 0° c-plane

0°	5°	10°	15°	20°	25°	30°	35°	40°	45°	50°	55°	60°	65°	70°	75°	80°	85°	90°	95°
108	101	90	78	63	45	37	39	39	38	35	31	27	22	17	12	7	4	1	0
100%	94%	84%	72%	58%	42%	35%	36%	37%	36%	33%	29%	25%	20%	15%	11%	7%	3%	1%	0%

Intensities in 90° c-plane

0°	5°	10°	15°	20°	25°	30°	35°	40°	45°	50°	55°	60°	65°	70°	75°	80°	85°	90°	95°
108	106	104	102	98	93	87	80	72	64	55	46	37	28	19	11	4	0	0	0
100%	98%	97%	95%	91%	86%	81%	74%	67%	60%	51%	43%	35%	26%	18%	10%	4%	0%	0%	0%

Intensities in 180° c-plane

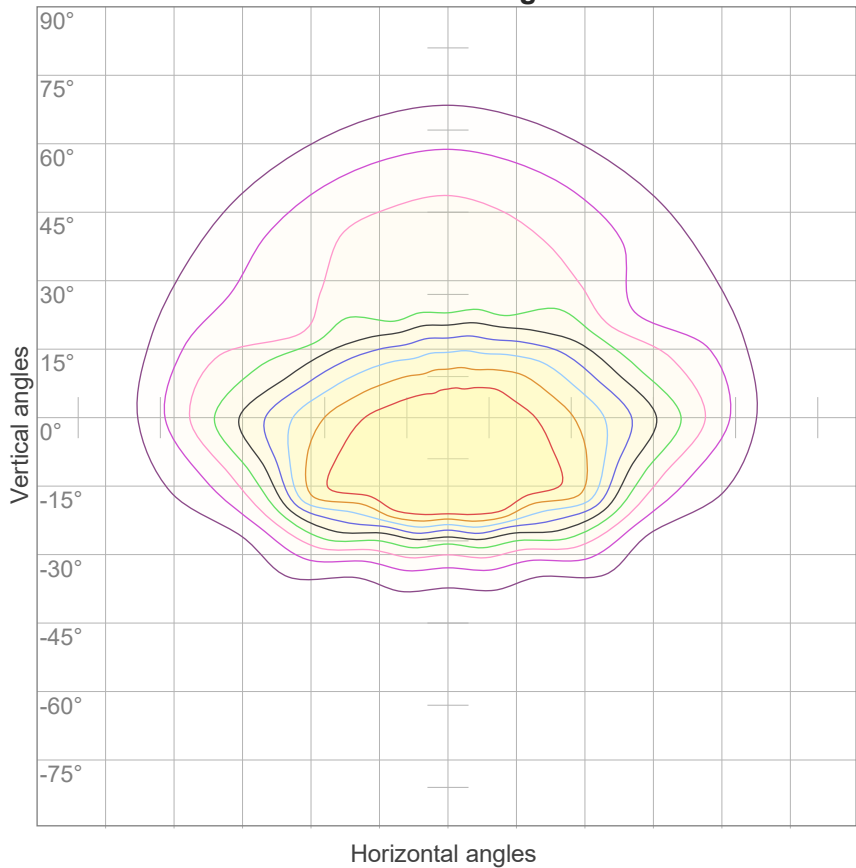
0°	5°	10°	15°	20°	25°	30°	35°	40°	45°	50°	55°	60°	65°	70°	75°	80°	85°	90°	95°
108	111	112	115	113	84	48	26	12	8	5	2	0	0	0	0	0	0	0	0
100%	103%	104%	106%	105%	78%	44%	25%	11%	7%	5%	2%	0%	0%	0%	0%	0%	0%	0%	0%

Intensities in 270° c-plane

0°	5°	10°	15°	20°	25°	30°	35°	40°	45°	50°	55°	60°	65°	70°	75°	80°	85°	90°	95°
108	105	104	101	97	92	86	79	72	64	55	46	37	28	20	12	5	1	0	0
100%	98%	96%	94%	90%	86%	80%	74%	67%	59%	51%	43%	35%	26%	18%	11%	4%	1%	0%	0%

Beam angle 50%	Field angle 10%	Cutoff angle 2,5%	Intensity ratio in 120° cone	Intensity ratio in 90° cone
70.1°	127.3°	148.5°	87.7%	69.3%

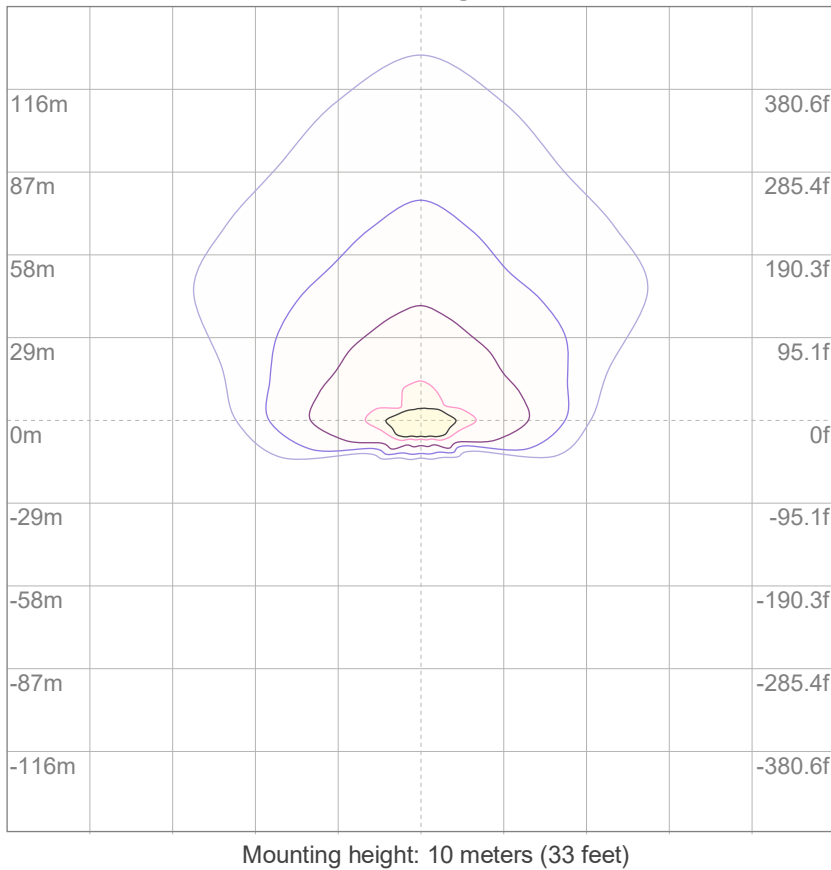
iso-candela diagram



10%	11 cd
20%	22 cd
30%	32 cd
40%	43 cd
50%	54 cd
60%	65 cd
70%	75 cd
80%	86 cd
90%	97 cd

Conditions:
Number of c-planes: 12
Candela at center: 108 cd

iso-lux diagram



3%	32.3m lx
5%	53.8m lx
10%	0.108 lx
30%	0.323 lx
50%	0.538 lx

Conditions:
Number of c-planes: 12
Lux at center: 1.08 lx

*Lux distribution on a surface
when lamp is mounted at 10
meters from the surface.*

Glare evaluation according to UGR

p Ceiling	70	70	50	50	30	70	70	50	50	30
p Walls	50	30	50	30	30	50	30	50	30	30
p Floor	20	20	20	20	20	20	20	20	20	20
Room size X Y	Viewing direction at right angles to lamp axis					Viewing direction parallel to lamp axis				
n/a	n/a	n/a	n/a	n/a	n/a	n/a	n/a	n/a	n/a	n/a
n/a	n/a	n/a	n/a	n/a	n/a	n/a	n/a	n/a	n/a	n/a
n/a	n/a	n/a	n/a	n/a	n/a	n/a	n/a	n/a	n/a	n/a
n/a	n/a	n/a	n/a	n/a	n/a	n/a	n/a	n/a	n/a	n/a
n/a	n/a	n/a	n/a	n/a	n/a	n/a	n/a	n/a	n/a	n/a
n/a	n/a	n/a	n/a	n/a	n/a	n/a	n/a	n/a	n/a	n/a
n/a	n/a	n/a	n/a	n/a	n/a	n/a	n/a	n/a	n/a	n/a
n/a	n/a	n/a	n/a	n/a	n/a	n/a	n/a	n/a	n/a	n/a
n/a	n/a	n/a	n/a	n/a	n/a	n/a	n/a	n/a	n/a	n/a
n/a	n/a	n/a	n/a	n/a	n/a	n/a	n/a	n/a	n/a	n/a
n/a	n/a	n/a	n/a	n/a	n/a	n/a	n/a	n/a	n/a	n/a
n/a	n/a	n/a	n/a	n/a	n/a	n/a	n/a	n/a	n/a	n/a
n/a	n/a	n/a	n/a	n/a	n/a	n/a	n/a	n/a	n/a	n/a
n/a	n/a	n/a	n/a	n/a	n/a	n/a	n/a	n/a	n/a	n/a
n/a	n/a	n/a	n/a	n/a	n/a	n/a	n/a	n/a	n/a	n/a
n/a	n/a	n/a	n/a	n/a	n/a	n/a	n/a	n/a	n/a	n/a
n/a	n/a	n/a	n/a	n/a	n/a	n/a	n/a	n/a	n/a	n/a
n/a	n/a	n/a	n/a	n/a	n/a	n/a	n/a	n/a	n/a	n/a
n/a	n/a	n/a	n/a	n/a	n/a	n/a	n/a	n/a	n/a	n/a
Variation of the observer position for the luminaire distance S										
n/a	n/a					n/a				
n/a	n/a					n/a				
n/a	n/a					n/a				
CIE 117-1995. Corrected glare indices referring to 180 lm total luminous flux										

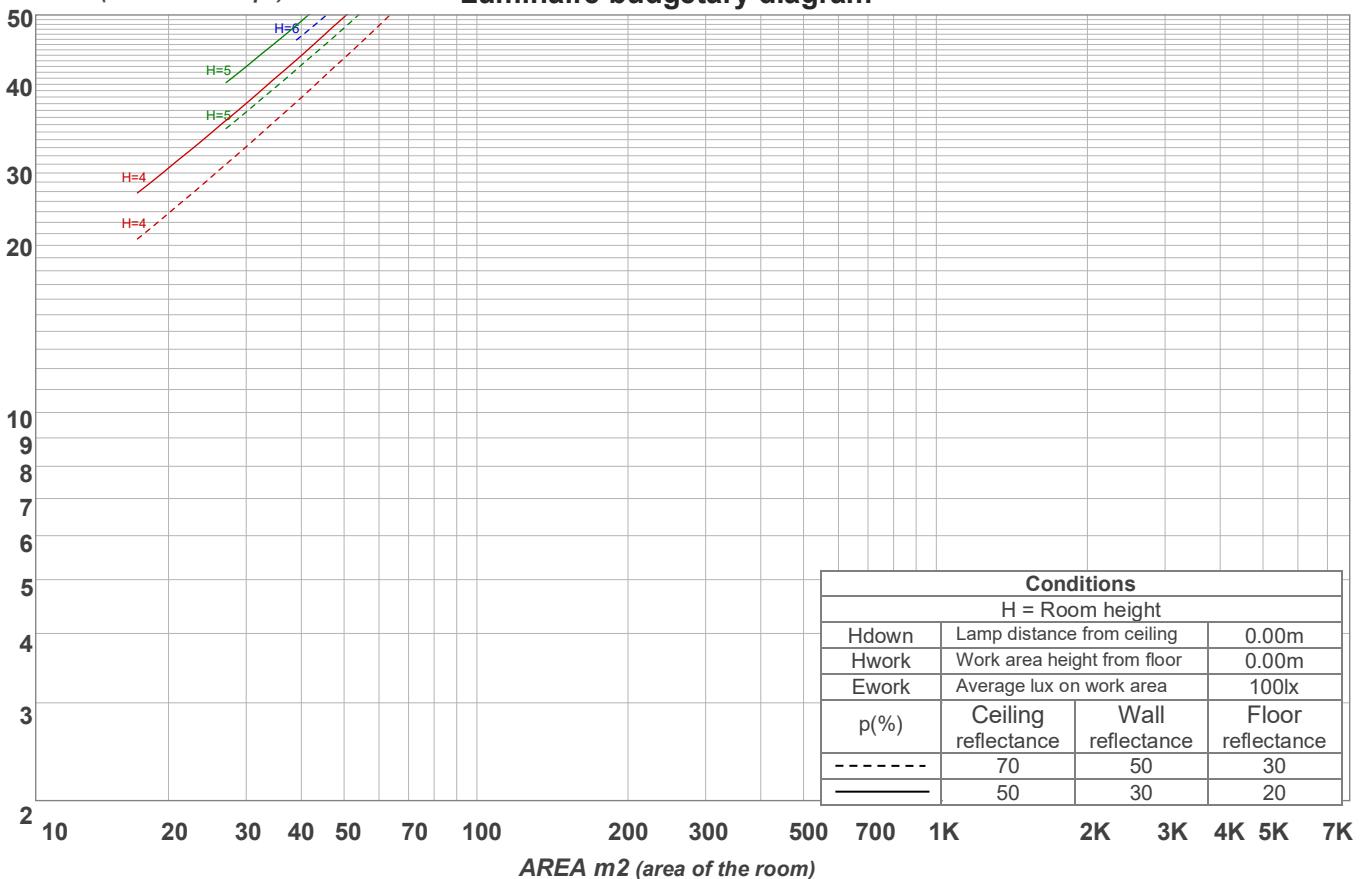
UGR data could not be calculated due to missing/wrong symmetry. Go to Edit -> Photometric -> Corrections and select Correct asymmetry (UGR not defined for asymmetrical distributions)..

Coefficients of Utilization

Ceiling reflectance	80				70				50			30			10			0
Wall reflectance	70	50	30	10	70	50	30	10	50	30	10	50	30	10	50	30	10	0
Floor reflectance	20	20	20	20	20	20	20	20	20	20	20	20	20	20	20	20	20	0
RCR	(RCR: Room Cavity Ratio) Room Values are expressed as percentage of Lumens delivered to the task surface																	
0	119	119	119	119	116	116	116	116	111	111	111	106	106	106	102	102	102	100
1	111	107	103	100	108	104	101	98	100	97	95	96	94	92	93	91	89	87
2	102	95	90	85	100	93	88	84	90	86	82	87	83	80	84	81	78	76
3	95	86	79	73	92	84	78	72	81	76	71	79	74	70	76	72	69	67
4	88	77	70	64	86	76	69	64	74	68	63	71	66	62	69	65	61	59
5	82	70	63	57	80	69	62	56	67	61	56	65	60	55	64	59	55	53
6	76	64	56	51	74	63	56	51	62	55	50	60	54	50	59	53	49	47
7	71	59	51	46	70	58	51	46	57	50	45	56	50	45	54	49	45	43
8	67	55	47	42	65	54	47	42	53	46	41	52	46	41	50	45	41	39
9	63	51	43	38	62	50	43	38	49	43	38	48	42	38	47	42	38	36
10	59	47	40	35	58	47	40	35	46	39	35	45	39	35	44	39	35	33

LAMPS (number of lamps)

Luminaire budgetary diagram



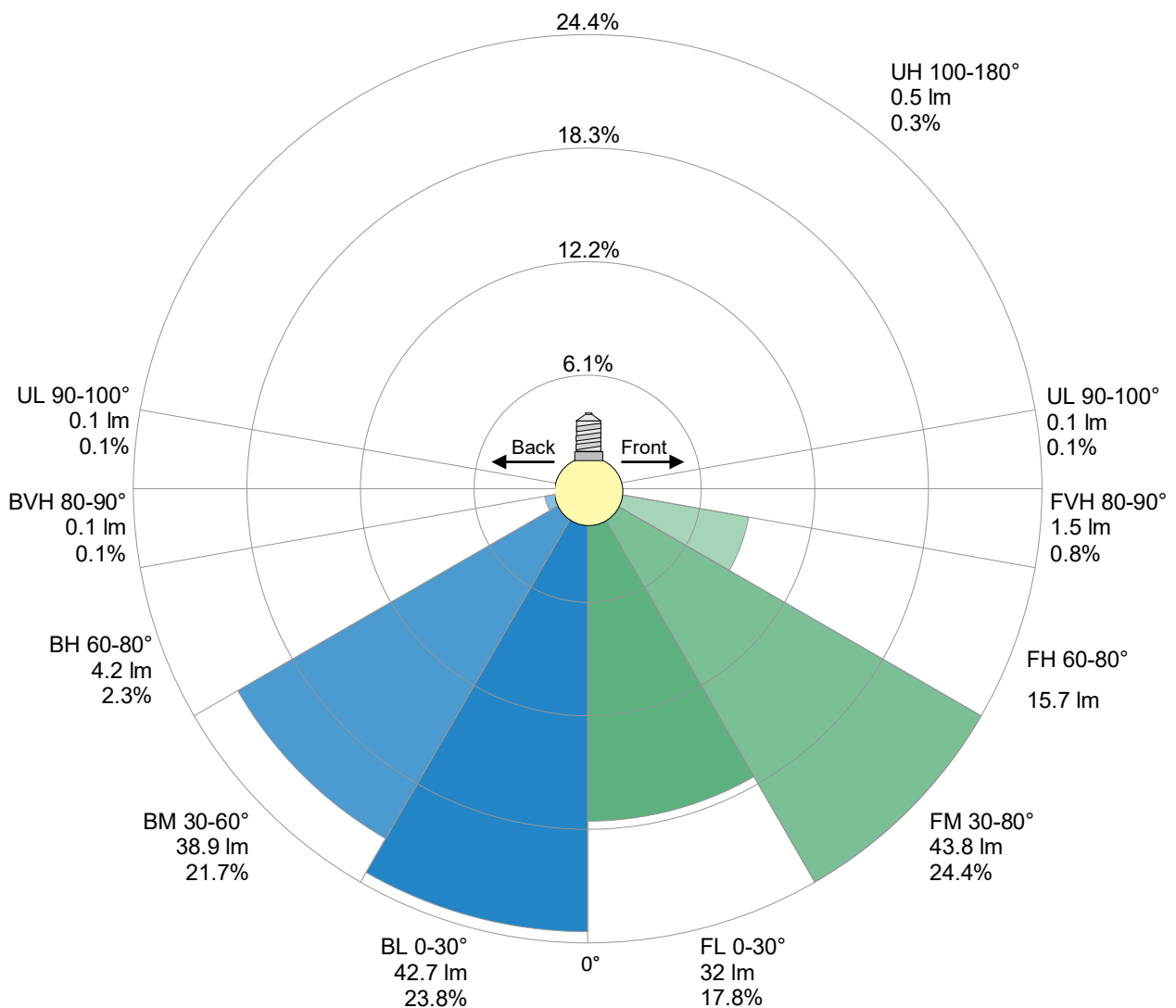
Zonal Lumen Summary

0°-10°	10°-20°	20°-30°	30°-40°	40°-50°	50°-60°	60°-70°	70°-80°	80°-90°
{LUM0-10}	27.7 lm	37.1 lm	34.8 lm	27.7 lm	20.1 lm	13.3 lm	6.64 lm	1.61 lm
90°-100°	100°-110°	110°-120°	120°-130°	130°-140°	140°-150°	150°-160°	160°-170°	170°-180°
0.105 lm	0.038 lm	0.047 lm	0.071 lm	0.087 lm	0.089 lm	0.082 lm	0.054 lm	0.018 lm

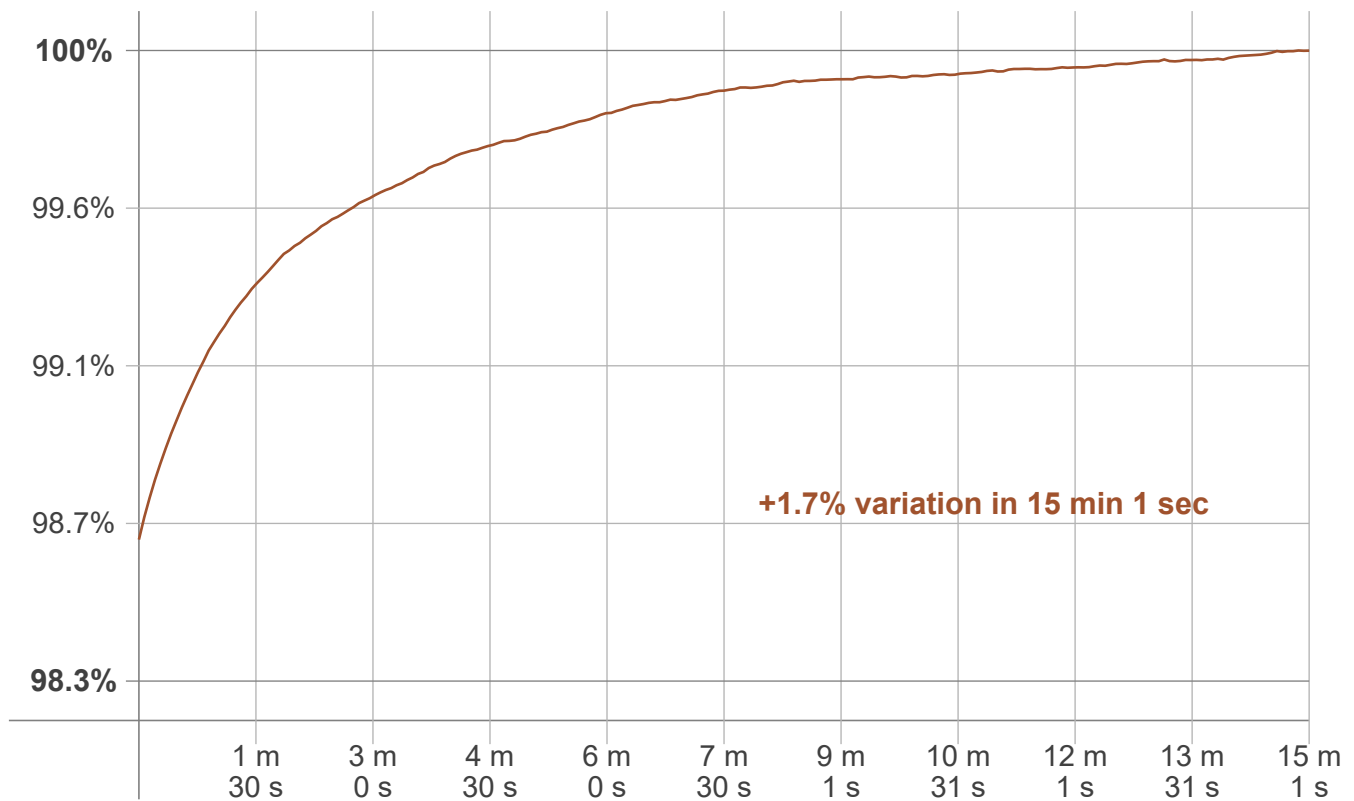
LCS table

BUG rating:	B0 U0 G0	
Forward light	Lumens	Lumens %
Low(0-30):	32	17.8%
Medium(30-60):	43.8	24.4%
High(60-80):	15.7	8.8%
Very high(80-90):	1.5	0.8%
Back light		
Low(0-30):	42.7	23.8%
Medium(30-60):	38.9	21.7%
High(60-80):	4.2	2.3%
Very high(80-90):	0.1	0.1%
Uplight		
Low(90-100):	0.1	0.1%
High(100-180):	0.5	0.3%

LCS graph



Warmup curve



Warmup result

Warmup time:	Lamp stabilized in 15 min 1 sec
Warmup variation	+1.7%

Warmup conditions

Stable period:	15 min
Stable change max:	2.0%
Minimum time:	15 min

Color temperature change

CCT start	CCT change	CCT end
2446 K	-7 K	2439 K

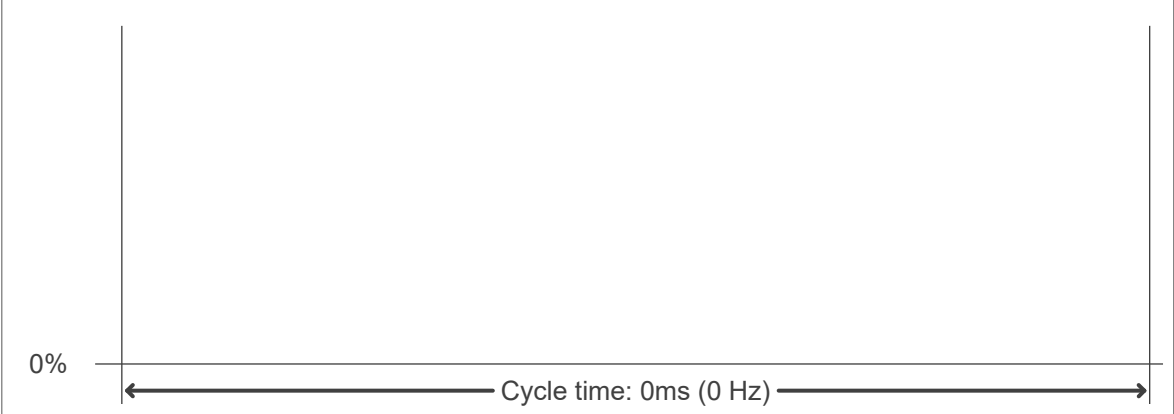
Output change

Output start	Output change	Output end
177 lm	+3 lm	180 lm

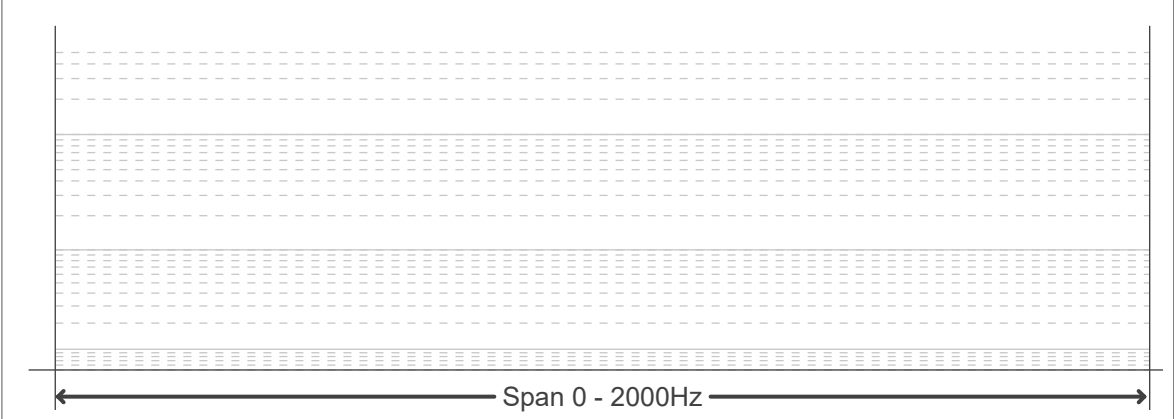
Flicker curve (complete sampled flicker signal)



Flicker frame (frame of one flicker period)



Flicker FFT (frequency scope of flicker curve)



Flicker results:

Flicker frequency:		n/a Hz	
Flicker index:	n/a	JA8/10 40Hz	n/a %
Flicker percentage:	n/a %	JA8/10 90Hz	n/a %
SVM: (Visual flicker)	n/a	JA8/10 200Hz	n/a %
PstLM	n/a	JA8/10 400Hz	n/a %
Mp	n/a	JA8/10 1000Hz	n/a %

Flicker conditions:

Sample rate:	n/a samples/second
--------------	--------------------